

## RX 70 Technical Data

### LPG Forklift Truck

---

[RX 70-16](#)

[RX 70-18](#)

[RX 70-20](#)



RX 70-16/20 LPG Forklift Truck  
Manoeuvrable and economical

This specification sheet, which conforms to VDI guideline 2198, provides the technical values for the standard equipment only.  
Different tyres, other masts, the use of accessories etc. may result in other values.



		STILL	STILL	STILL
Distinguishing features	1.1	Manufacturer		
	1.2	Manufacturer's type designation	<b>RX 70-16</b>	<b>RX 70-18</b>
	1.2.1	Type number	7314	7315
	1.3	Drive	LPG	LPG
	1.4	Operation	Seated	Seated
	1.5	Nominal load capacity/load	Q kg 1600	1800
	1.6	Load centre distance	c mm 500	500
	1.8	Load distance	x mm 395	395
	1.9	Wheel base	y mm 1450	1487
Weights	2.1	Service weight	kg 2706	2856
	2.2	Axle load, laden	front/rear kg 3817/489	4149/507
	2.3	Axle load, unladen	front/rear kg 1230/1476	1266/1590
Tyres /chassis	3.1	Tyres	Superelastic	Superelastic
	3.2	Tyre size	front mm 18 x 7-8	18 x 7-8
	3.2	Tyre size	rear mm 18 x 7-8	18 x 7-8
	3.5	Number of wheels (x = driven)	front/rear 2x/2	2x/2
	3.6	Track width	front/rear mm 932/895	932/895
	4.1	Tilt of mast/fork carriage	forward/backward $\alpha/\beta$ ° 3/8	3/8
Basic dimensions	4.2	Height of mast when retracted	h <sub>1</sub> mm 2160	2160
	4.3	Free lift	h <sub>2</sub> mm 150	150
	4.4	Lift	h <sub>3</sub> mm 3230	3230
	4.5	Height of mast when extended	h <sub>4</sub> mm 3873	3725
	4.7	Height above protective roof (cab)	h <sub>6</sub> mm 2117	2117
	4.8	Seat height in terms of SIP	h <sub>7</sub> mm 1015	1015
	4.12	Coupling height	h <sub>10</sub> mm 474	474
	4.19	Overall length	l <sub>1</sub> mm 2975	3012
	4.20	Length including fork backs	l <sub>2</sub> mm 2175	2212
	4.21	Overall width	b <sub>1</sub> mm 1099	1099
	4.22	Fork dimensions	s/e/l mm 40/80/800	40/80/800
	4.23	Fork carriage ISO 2328, class/form A, B	Cl. II, form A	Cl. II, form A
	4.24	Fork carriage width	b <sub>3</sub> mm 980	980
	4.31	Ground clearance under mast	m <sub>1</sub> mm 90	90
	4.32	Ground clearance, centre of wheel base	m <sub>2</sub> mm 133	133
	4.34.1	Working aisle width with pallet 1000 x 1200 crossways	A <sub>st</sub> mm 3523	3557
4.34.2	Working aisle width with pallet 800 x 1200 lengthways	A <sub>st</sub> mm 3727	3762	
4.35	Turning radius	W <sub>a</sub> mm 1926	1961	
4.36	Smallest pivoting distance	b <sub>13</sub> mm 538	544	
Performance data	5.1	Travel speed	laden/unladen km/h 22/22	22/22
	5.2	Lifting speed	laden/unladen m/s 0.52/0.54	0.52/0.54
	5.3	Lowering speed	laden/unladen m/s 0.59/0.59	0.59/0.59
	5.5	Drawbar pull	laden/unladen N 13200/6700	13200/6700
	5.7	Gradeability	laden/unladen % 27/28	26/28
	5.9	Acceleration time	laden/unladen s 4.9/4.6	5.0/4.7
	5.10	Service brake	Mechanical/hydraulic	Mechanical/hydraulic
	7.1	Engine manufacturer	Linde MH	Linde MH
	7.1.1	Type	BEF S1	BEF S1
	7.2	Engine performance in accordance with ISO 1585	kW 30	30
IC engine	7.3	Nominal speed	1/min 2350	2350
	7.4	Number of cylinders	4	4
	7.4.1	Capacity	cm <sup>3</sup> 2000	2000
	7.5	Fuel consumption according to VDI cycle	kg/h 2,2	2,3
	7.9	On-board voltage	U V 12	12
Miscellaneous	8.1	Type of drive unit	Diesel-electric	Diesel-electric
	10.1	Operating pressure for accessory equipment	bar 230	230
	10.2	Oil volume for accessory equipment	l/min 30	30
	10.4	Fuel tank capacity	kg 11	11
	10.7	Sound pressure level <sup>1</sup> L <sub>pAZ</sub> (operator's position)	dB(A) <74	<74
	10.7.1	Sound power level LWAZ (working cycles)	dB(A) <99	<99
		Human vibrations <sup>2</sup> : acceleration according to EN 13059	m/s <sup>2</sup> 0.71	0.71
	10.8	Trailer coupling, item/DIN type	Bolt	Bolt

<sup>1</sup> With cab; different values without cab

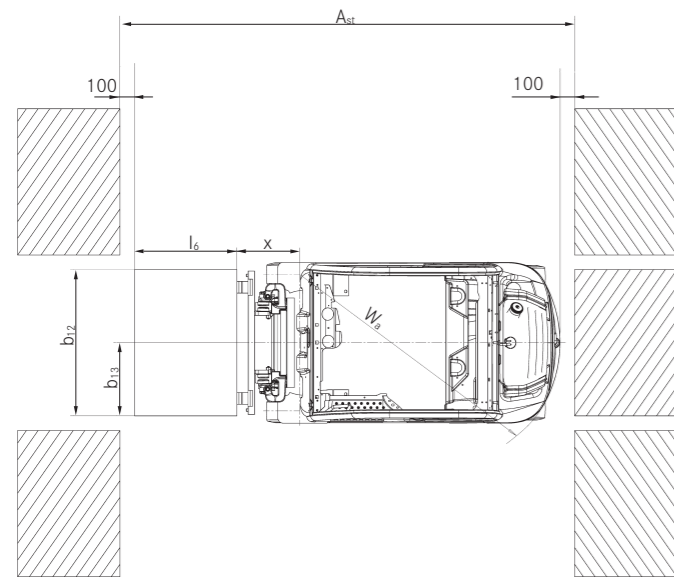
<sup>2</sup> With standard driver's seat

RX 70-16/20 Diesel and LPG Forklift Truck  
Mast Tables

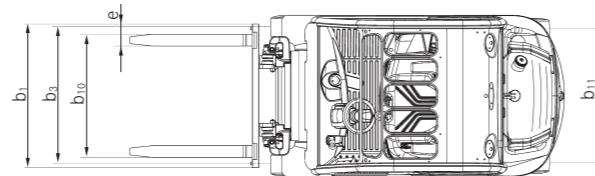


			Telescopic mast								HiLo mast				Triplex mast							
			h <sub>3</sub>	mm	3030	3230	3530	3930	4230	4730	5430	3175	3375	3575	3975	4320	4920	5220	5620	6070	6820	7870
RX 70-16	Nominal lift	h <sub>3</sub>	mm	3030	3230	3530	3930	4230	4730	5430	3175	3375	3575	3975	4320	4920	5220	5620	6070	6820	7870	
	Overall height	h <sub>1</sub>	mm	2060	2160	2310	2510	2660	2910	3260	2060	2160	2260	2460	2060	2160	2260	2460	2610	2860	3210	
	Free lift	h <sub>2</sub>	mm	150	150	150	150	150	150	150	1462	1562	1662	1862	1462	1562	1662	1862	2012	2262	2612	
	Maximum height	h <sub>4</sub>	mm	3673	3873	4173	4573	4873	5373	6073	3793	3993	4193	4593	5238	5538	5838	6238	6688	7438	8488	
	Tilt of mast/fork carriage	forward/backward	α/β	°	3/8								3/6				3/6					
	Fork lock-in position centre-centre			mm	216/368/445/521/673/760								216/368/445/521/673/760				216/368/445/521/673/760					
	Tyres	front/rear			18 x 7-8 / 18 x 7-8 // 200/50-10 / 18 x 7-8						100/50-10 / 18 x 7-8		18 x 7-8 / 18 x 7-8				18 x 7-8 / 18 x 7-8 // 200/50-10 / 18 x 7-8					
	Track	front/rear	b <sub>10</sub> /b <sub>11</sub>	mm	932/895						990/895		932/895				932/895		990/895			
	Maximum width		b <sub>1</sub>	mm	1099						1188		1099				1099		1188			
				<b>Telescopic mast</b>								<b>HiLo mast</b>				<b>Triplex mast</b>						
RX 70-18	Nominal lift	h <sub>3</sub>	mm	3030	3230	3530	3930	4230	4730	5430	3060	3260	3460	3860	4470	4770	5070	5470	5920	6670	7720	
	Overall height	h <sub>1</sub>	mm	2060	2160	2310	2510	2660	2910	3260	2060	2160	2260	2460	2060	2160	2260	2460	2610	2860	3210	
	Free lift	h <sub>2</sub>	mm	150	150	150	150	150	150	150	1412	1512	1612	1812	1412	1512	1612	1812	1962	2212	2562	
	Maximum height	h <sub>4</sub>	mm	3673	3873	4173	4573	4873	5373	6073	3743	3943	4143	4543	5138	5438	5738	6138	6588	7338	8388	
	Tilt of mast/fork carriage	forward/backward	α/β	°	3/8								3/6				3/6					
	Fork lock-in position centre-centre			mm	216/368/445/521/673/760								216/368/445/521/673/760				216/368/445/521/673/760					
	Tyres	front/rear			18 x 7-8 / 18 x 7-8 // 200/50-10 / 18 x 7-8						200/50-10 / 18 x 7-8		18 x 7-8 / 18 x 7-8				18 x 7-8 / 18 x 7-8 // 200/50-10 / 18 x 7-8					
	Track	front/rear	b <sub>10</sub> /b <sub>11</sub>	mm	932/895						990/895		932/895				932/895		990/895			
	Maximum width		b <sub>1</sub>	mm	1099						1188		1099				1099		1188			
				<b>Telescopic mast</b>								<b>HiLo mast</b>				<b>Triplex mast</b>						
RX 70-20	Nominal lift	h <sub>3</sub>	mm	3030	3230	3530	3930	4230	4730	5430	3070	3270	3470	4045	4465	4765	5065	5665	6115	6865	7915	
	Overall height	h <sub>1</sub>	mm	2060	2160	2310	2510	2660	2910	3260	2060	2160	2260	2460	2060	2160	2260	2460	2610	2860	3210	
	Free lift	h <sub>2</sub>	mm	150	150	150	150	150	150	150	1505	1605	1705	1905	1505	1605	1705	1905	2055	2305	2655	
	Maximum height	h <sub>4</sub>	mm	3525	3725	4025	4425	4725	5225	5925	3645	3845	4045	4445	5055	5355	5655	6255	6705	7455	8505	
	Tilt of mast/fork carriage	forward/backward	α/β	°	3/8								3/6				3/6					
	Fork lock-in position centre-centre			mm	216/368/445/521/673/760								216/368/445/521/673/760				216/368/445/521/673/760					
	Tyres	front/rear			200/50-10 / 18 x 7-8						200/50-10 / 18 x 7-8		200/50-10 / 18 x 7-8				200/50-10 / 18 x 7-8					
	Track	front/rear	b <sub>10</sub> /b <sub>11</sub>	mm	942/895						990/895		942/895				942/895		990/895			
	Maximum width		b <sub>1</sub>	mm	1138						1188		1138				1138		1188			

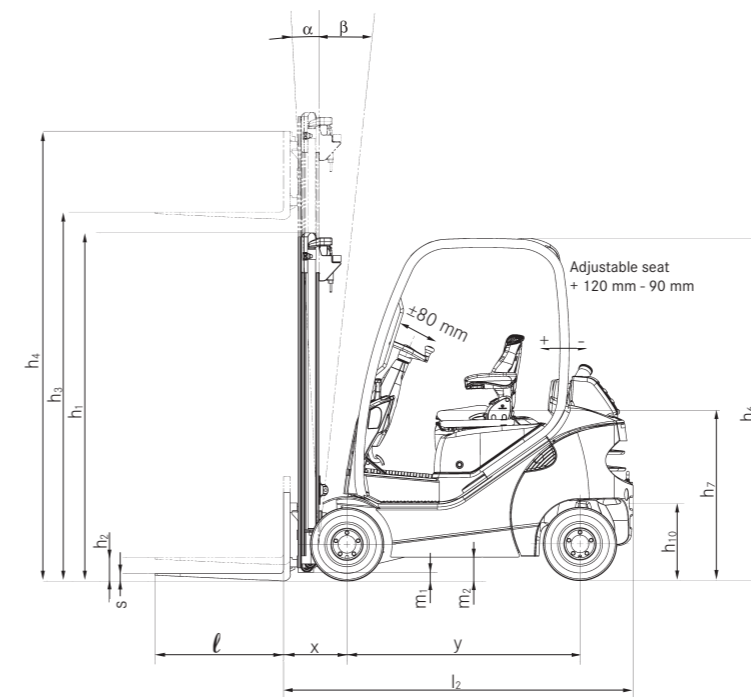
Technical Drawings



Top view



Top view

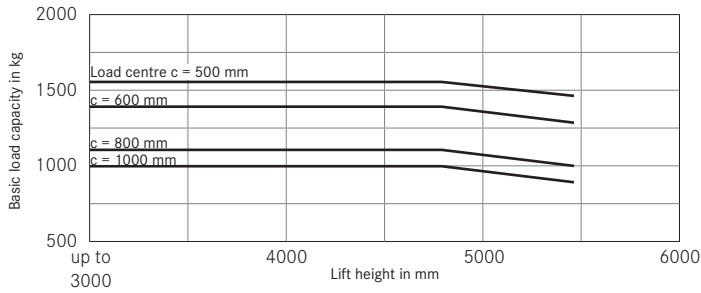


Side view

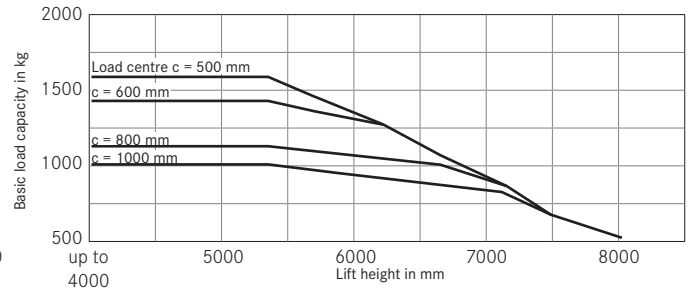
# RX 70-16/20 Diesel and LPG Forklift Truck

## Basic Load Capacities

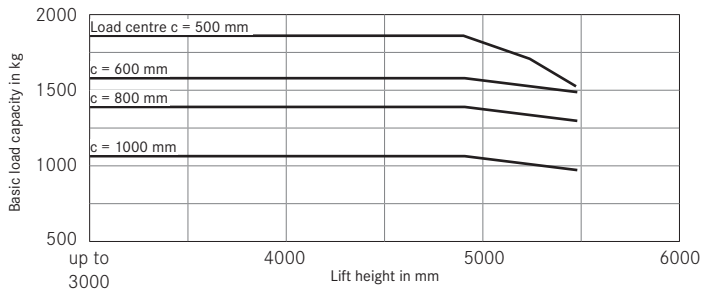
**RX 70-16 Telescopic and HiLo mast**  
Superelastic tyres



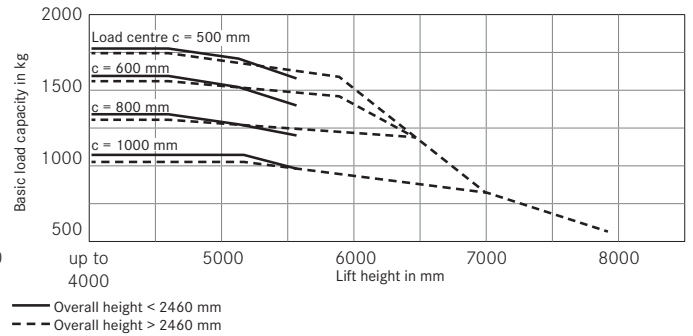
**RX 70-16 Triplex mast**  
Superelastic tyres



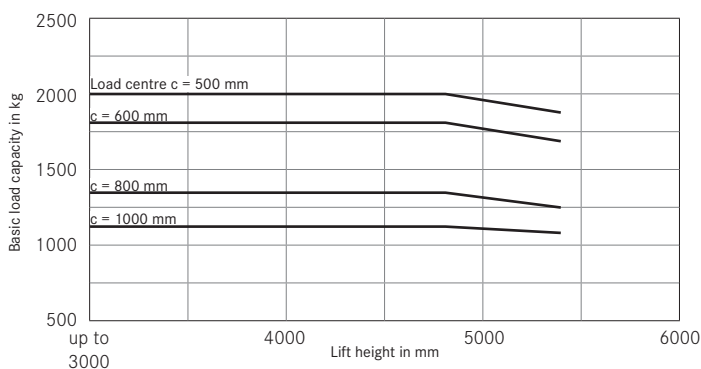
**RX 70-18 Telescopic and HiLo mast**  
Superelastic tyres



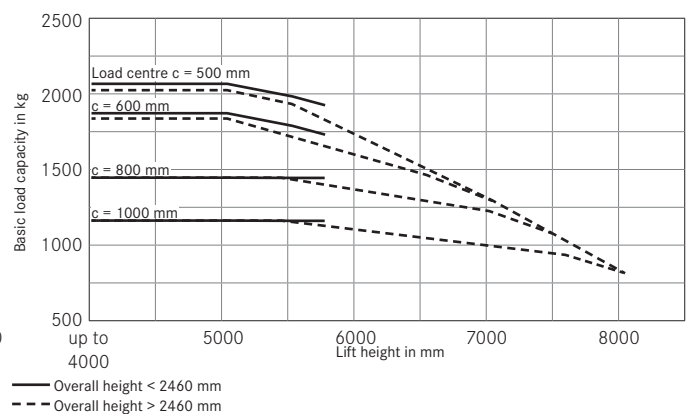
**RX 70-18 Triplex mast**  
Superelastic tyres



**RX 70-20 Telescopic and HiLo mast**  
Superelastic tyres



**RX 70-20 Triplex mast**  
Superelastic tyres



The values indicated may vary depending on the truck's features



RX 70-16/20 Diesel and LPG Forklift Truck  
Detailed Photos



Intuitive and precise operation of the hydraulic functions



Ergonomic, non-tiring and precise work with Joystick 4Plus



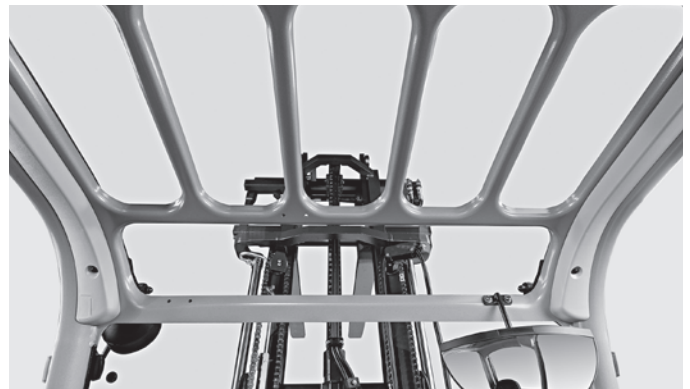
Spaciously dimensioned and comfortable driver's cab



Spacious access area with comfortable dual pedal controls



Comfortable, high quality driver's seat



Optimum visibility thanks to narrow protective roof profiles



Good service and maintenance access



Safe and convenient entry and exit thanks to large, non-slip and clearly visible step

RX 70-16/20 Diesel and LPG Forklift Truck  
Manoeuvrable and economical



## RX 70-16/20 Diesel and LPG Forklift Truck

### Manoeuvrable and economical

---

High availability, extended period of use and low operating costs through a diesel-electric drive with a powerful industrial motor

High energy efficiency due to Blue-Q energy-saving mode

Safe and convenient load handling thanks to precise and direct hydraulics operation



The RX 70-16/20 LPG forklift truck with a load capacity of up to two tonnes combines the advantages of the powerful combustion engine with the precision control of an electric drive, guaranteeing high availability, a long service life and lower operating costs. The compact design and high manoeuvrability coupled with sensitive transmission and lifting control ensure outstanding handling performance. All drive components are encased to provide protection against dust and water ingress. As a result, the trucks are perfect for a range of applications, including indoor and outdoor use in the construction industry, building materials sector and wood processing, the

metalworking industry and the food and beverage industry. Customers in the logistics and freight-carrier industries also stand to benefit. The bend-proof and torsionally rigid mast allows safe load handling, even for heavy loads with a high residual load capacity. The comfortable driver's cab incorporates the latest ergonomic criteria to combat fatigue and improve safety. Driving and lifting behaviour can be aligned to individual driver habits.

Five pre-defined driving programmes are available. Blue-Q energy-saving mode saves up to 10 per cent energy at the press of a button, with no loss of performance.

## The 'Simply Efficient' factors: Performance attributes as a measure of economic efficiency

---



### Simply easy

---

- Intuitive handling: standard, easy-to-use operating concept across the whole RX product line
- Spacious, comfortable and customisable driver's cab with a multitude of storage options



### Simply powerful

---

- High performance: powerful drive meets precise control
- Effective goods handling: travel speed of up to 22 km/h
- Can lift up to two tonnes with a load centre of 500 mm
- Powerful and efficient: Drive with hybrid technology enables high handling rate with low consumption
- Safe load handling even with heavy loads due to robust, bend-proof and torsionally rigid mast



### Simply safe

---

- Perfect all-round visibility thanks to narrow mast profile, large windows on all sides and narrow protective profiles
- Asymmetrically offset driver's seat affords excellent view of load and fork carriage
- Optimum safety and stability thanks to the truck's low centre of gravity
- Secure load handling thanks to precise and direct hydraulic control



### Simply flexible

---

- Choice of 5 driving modes: select maximum turnaround or maximum efficiency
- Speed, acceleration and braking can all be individually configured
- Choose from a range of individual control options: mini-lever, Fingertip or Joystick 4Plus



### Simply connected

---

- Digital Performance Boost: optional interface for integration into fleet management software, such as STILL neXXt fleet
- Flexible networking: the provision for MMS means that the truck can be integrated into every material flow management system with ease



# RX 70-16/20 Diesel and LPG Forklift Truck

## Equipment Variants



	RX 70-16 T	RX 70-18 T	RX 70-20 T	
Driver's cab	Impact-absorbing driver's seat for optimal comfort on uneven routes	●	●	●
	Protective steel roof, height 2,117 mm	●	●	●
	Weather protection design in different variants	○	○	○
	Driver's cab (height: 2,139 mm) or tarpaulin cab	○	○	○
	Tinted front windscreen, rear and front windows, windscreen washing/wiping system	○	○	○
	Single-pedal drive control	●	●	●
	Double-pedal drive control	○	○	○
	Built-in storage and cup holder	●	●	●
	Display and function buttons protected from water spray	●	●	●
	Writing pad support and clipboard (removable) with a light	○	○	○
	Grammer driver's seat with leatherette cover	●	●	●
	Comfortable driver's seat with textile cover and lumbar support	○	○	○
	Swivel seat for a healthy body posture when reversing	○	○	○
	Driver's seat exclusively with leatherette or textile cover, mechanical or airsprung, extra-wide seat pad, large suspension travel, lumbar support, height-adjustable back extension and heated seat	○	○	○
	Horizontal spring plate for driver's seat to minimise human vibrations	○	○	○
	Roof liner with interior lighting	○	○	○
	Radio/MP3 player with USB connection	○	○	○
	Adjustable roof window	○	○	○
	Protective sunshade and sun blind	○	○	○
	Water heating with blower and defroster nozzles for front windscreen and footwell	○	○	○
Air conditioning	○	○	○	
Mast	Telescopic free view mast with and without full free lift	○	○	○
	Triplex free view mast	○	○	○
	Fork wear protection	○	○	○
	Different fork carriage widths and integrated side shifter	○	○	○
	Load backrest	○	○	○
	Automatic vertical mast position	○	○	○
	Hydraulic accumulator in the lifting cylinder to attenuate pressure peaks in the hydraulic system	○	○	○
	Angle of incline 3/6 or 3/8 degrees front/rear incline	●	●	●
	Bellows protect the tilt cylinder from dust and moisture	○	○	○
	Superelastic tyres, SIT system, single or twin	●	●	●
Tyres	Superelastic tyres, SIT system, natural colour or anti-static	○	○	○
	Single air-filled tyre	○	○	○
Hydraulics	Proportional valve technology for especially sensitive movements	●	●	●
	Mini-lever with armrest, two levers	●	●	●
	Mini-lever with armrest, 3 or 4 levers, Joystick 4Plus or Fingertip	○	○	○
	Up to three hydraulic circuits for controlling accessories	○	○	○
Drive	Custom parametrisation of hydraulic functions	●	●	●
	Five driving programmes for different driving and braking behaviour	●	●	●
	Blue-Q energy-saving mode	●	●	●
	Smooth acceleration and reversing	●	●	●
	Maintenance-free drives for driving, steering and lifting	●	●	●
	Travel and lift drive components encased to protect against dust and dirt	●	●	●
	Dry air filter with maintenance indicator	●	●	●
	Additional air filter or cyclone pre-separator	○	○	○
	Gas forklift with LPG cylinders	●	●	●
	40 litre LPG tank	○	○	○
	Automatic engine shut-off	○	○	○
	Engine preheating via external power connection	○	○	○
Regulated 3-way catalytic converter	○	○	○	
Brake	Wear-free disc brakes that run in an oil bath	●	●	●
	Energy recovery when braking	●	●	●
	Hydraulic parking brake	●	●	●
Safety	Forklift truck has a low centre of gravity and steering axle with high self-aligning bearing for optimum levels of safety	●	●	●
	Protective grille roof	○	○	○
	Narrow protective roof profile for an optimum all-round view	●	●	●
	Restraint system: IWS side restraints on both sides and Easybelt to be engaged and disengaged quickly and safely	○	○	○
	Lighting system in halogen or LED design, approvable	○	○	○
	Working lights in halogen or LED design	○	○	○
	Roof window in rear protective roof area, improved visibility when reversing	●	●	●
	Warning flash light	○	○	○
	STILL Safety Light warning device, illuminated blue	○	○	○
	Seat belt control, drive unit only enabled when seat belt is fastened	○	○	○
	Speed limiter adjustable by driver	○	○	○
	Tempomat cruise control	○	○	○
	Load measuring with ±5% precision	○	○	○
FleetManager: access authorisation, shock detection, reports	○	○	○	

● Standard ○ Option — Not available



STILL GmbH  
Berzeliusstr. 10  
22113 Hamburg  
Germany  
Tel.: +49 40 73 39 20 00  
Fax: +49 40 73 39 20 01  
info@still.de

**For further information please visit**  
**[www.still.eu](http://www.still.eu)**

STILL is certified in the following areas: Quality management, occupational safety, environmental protection and energy management.



first in intralogistics